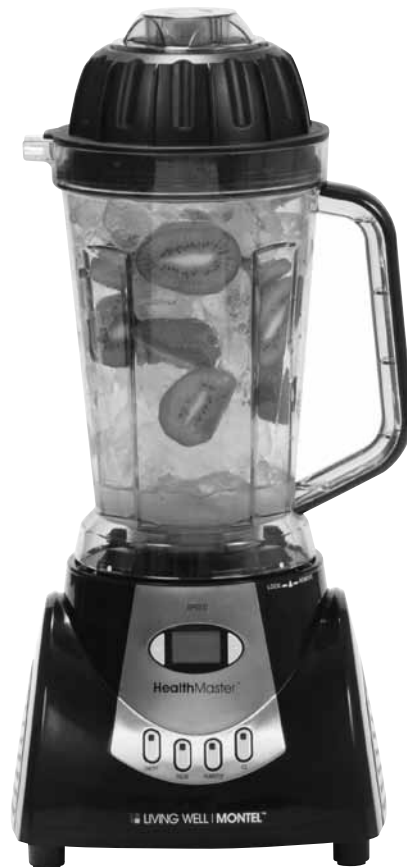


# HealthMaster™ Blender

OWNER'S MANUAL





# table of contents



important safeguards/specifications	4
parts & accessories	5
assembling the HealthMaster™ Blender	6 - 9
using your HealthMaster™ Blender	10
controls	11
using the tamper	12
HealthMaster™ Blender helpful hints	13
cleaning and maintenance	13 - 14
frequently asked questions	15
warranty information	16
troubleshooting	17
replacement parts order form	18

# IMPORTANT SAFEGUARDS

**IMPORTANT** Read this manual carefully and completely before attempting to operate the HealthMaster™ Blender. Failure to do so could result in serious personal injury.

- Blades are sharp. Handle carefully.
- Children should not be permitted to operate this, or any other kitchen appliance, without the constant supervision of a qualified adult.
- Do not attempt any home repairs to this unit. Should the unit require repair, such repair should only be performed by a qualified professional.
- Unit For Indoor Use Only. To reduce the risk of electric shock, never expose any part of this appliance including the power cord, plug or motorized Base to rain, moisture or immersion in liquids of any kind.
- The unit has a polarized plug. One prong is narrower than the other and it will fit only one way into an electrical outlet. Never force the plug into the outlet. If it doesn't fit after trying it one way and then reversing it . . . contact an electrician. Do not modify the plug in any way.
- Never use an adaptor or an extension cord.
- Never assemble, disassemble or handle the unit while it is plugged into an electrical outlet. Keep unplugged when not in use.
- The HealthMaster™ Blender comes equipped with a Tamper. This is the only utensil you should ever use while operating this unit. Using other utensils may damage the unit and cause possible personal injury.
- To prevent overheating, do not block any ventilation intake openings (see page 5).
- Use on a dry, stable surface.



**WARNING: Failure to follow these instructions can result in death, fire, or electric shock.**

- When preparing fresh baby food always consult with your physician (pediatrician) before making any dietary changes. Certain fruits and vegetables are not recommended for infants or young children due to immature digestive systems, allergies, or other developmental reasons.
- When preparing fresh baby food, to prevent choking, always make sure all fruits and vegetables are completely liquefied before feeding them to a baby.
- To avoid personal injury: Never remove the Lid while the motor is running. If something is stuck press the OFF button, wait for motor to stop running, unplug the unit then remove the Cap only, insert the Tamper to dislodge stuck food. If food remains stuck, disassemble and remove the blocked food.
- Make sure the Pitcher is attached properly and securely locked before pressing the ON button. HealthMaster™ Blender will not operate unless the Pitcher is in locked position.
- Never use hands, fingers, or other utensils to insert food into the Pitcher. Use the Tamper only.
- Never leave the HealthMaster™ Blender unattended while motor is running.
- Never add ingredients to the HealthMaster™ Blender while unit is running at a speed of higher than #1.
- We do not recommend pressing the RUN button when the Pitcher is empty.
- Always use one hand to hold the Pitcher handle as this unit operates at high speeds.
- Never put fruits with pits in the HealthMaster™ Blender. Remove pits prior to placing items into the Pitcher.
- The maximum capacity is 50 oz. or 1500 ml. Use significantly less with thicker ingredients.
- Always make sure the Lid and E-Z Lock Cap are securely in the locked position before use.
- Do not let cord come in contact with stove, other hot surfaces or hang over edge of table or counter.

**SPECIFICATIONS: Model YD-2089 120 VAC 60Hz 700W.**

## SAVE THESE INSTRUCTIONS

# parts and accessories

**IMPORTANT:** Your HealthMaster has been shipped with the following components. Check everything carefully before use. If any part is missing or has been damaged in shipping do not use this product and contact shipper using the customer service number located in the back of this owner's manual.



# assembling the HealthMaster™ Blender



**BEFORE ASSEMBLING:** Unwind power cord to desired length.

**WARNING:** Do not plug power cord into electrical outlet until unit is fully assembled.

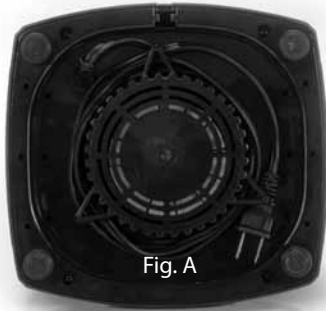


Fig. A

This appliance was designed with built-in power cord storage beneath the Base. (See Figure A)

Store the excess length of cord neatly underneath to avoid accidental tipping of machine while in use. Power to unit will not take place unless steps 1 – 6 in this section are followed carefully.

1. Place the motor Base on a stable, dry surface.



# assembly (cont.)



2. Firmly seat the Pitcher onto the motor Base while aligning the white dot on the Pitcher with the REMOVE symbol on the Base. (See Figure B)



Fig. B

3. Rotate the Pitcher clockwise until the dot symbol on the Pitcher aligns with the Arrow symbol on the Base. (See Figure C) The Pitcher will lock into place and engage the Pitcher Safety Interlock Switch.



Fig. C

**Note:** There are 4 white dots on your Pitcher. Align the Arrow symbol with any of the 4 dots to activate the Pitcher Safety Interlock Switch.

# assembly (cont.)



**NOTE:** At this point you may want to place the ingredients for processing into the unit. Insert ingredients into the Pitcher, soft foods first, harder items last. The E-Z Lock Cap can be removed during operation to add additional ingredients or to insert the Tamper. The E-Z Lock Cap should only be removed at speed #1. Always replace Cap when you are finished inserting Tamper or additional ingredients.



**4.** Insert the E-Z Lock Cap into the Lid (aligning the Cap's tabs with the Lid's slots) and turn clockwise to lock.

**NOTE:** While the power is ON and as air pressure inside the Pitcher increases, the Safety Valve will automatically be pushed upward to release pressure. Prior to use, make certain that the Safety Valve is free of any obstruction and moves up and down freely.



# assembly (cont.)



5. Place Lid on the Pitcher and push firmly down into place.
6. Make sure the unit is assembled properly before connecting the power cord to the electrical outlet. Once plugged in and ON/OFF button is pushed, ON/OFF lamp turns red and LCD display turns on to show you have assembled the blender properly.



# using the HealthMaster™ Blender



1. After assembling and plugging in the blender, you have to push ON/OFF button, then ON/OFF lamp turns red and LCD display turns on to show you have assembled the blender properly.
2. BEFORE pushing the RUN, PULSE, or ICE button — hold the top of the assembled unit to prevent tipping when starting.
3. After pushing the ON/OFF button wait until the Blades completely stop spinning and unit is unplugged before removing the Cap, Lid or the Pitcher.

**NOTE:** Unit will not turn on until Pitcher Safety Interlock is fully rotated to the locked position.

# controls

**NOTE:** This appliance is equipped with one Pitcher Safety Interlock Switch that must be engaged before the unit will operate. (See page 7).



## **ON/OFF Button:**

Push once for ON. Push once for OFF. The button lights up RED when the blender is ON.

## **SPEED**

**Selection:** Use the (+) and (-) buttons to select the speed, 1 through 8.

**PULSE:** Press and release to get a single burst of speed for each pulse until you have achieved the desired results. The button lights up BLUE when activated.

**RUN/STOP:** Press RUN/STOP to start the blender. If the speed was not set the HealthMaster will run at speed 1. The button lights up BLUE when activated. You must press RUN/STOP again to stop.

**ICE:** Pressing the ICE button causes the HealthMaster to operate on a cycle of 1 second on and 4 seconds off. The button lights up Blue when activated. Press ICE again to stop.

# using the tamper



**The Tamper is useful when preparing thick or frozen mixtures. The Tamper can be used while the machine is running.**

1. Make sure Lid is secured in place.
2. Remove E-Z Lock Cap from Lid.
3. Insert Tamper through the opening in the Lid.
4. Hold the Pitcher handle with one hand, grasp Tamper with the other hand.
5. Move up and down or in a circular motion to move contents around the Blade.

## **Tips for Using the Tamper:**

When preparing thick mixtures that don't circulate freely, insert the Tamper and move in a circular motion. This will help remove any air or ingredients trapped by the Blade. The Lid prevents the Tamper from making direct contact with the Blade.

# HealthMaster™ Blender helpful hints

- Always remove all stems and large pits such as peach, mango, apricot, etc. before processing as these items can damage the Blade and cause the motor to malfunction.
- Unless otherwise instructed, insert wet ingredients into the HealthMaster™ Blender first, then dry ingredients, then ice if needed.
- Thoroughly wash all fruits and vegetables before juicing to remove any dirt or chemicals.
- Fruits and vegetables juice best when they are fresh and firm.
- Always serve fresh foods immediately. After just a few seconds they begin to lose vitamin potency.

## **CLEANING AND MAINTENANCE**

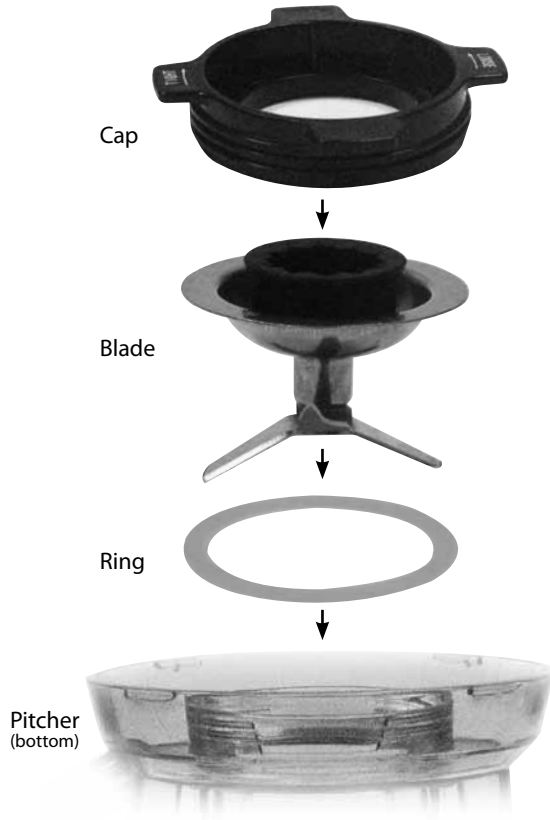
1. Press ON/OFF button again and wait until the motor completely stops.
2. Using dry hands, unplug the power cord from electrical outlet.
3. Disassemble the machine.
4. Wash the Lid and Cap in warm soapy water. Rinse and dry thoroughly before first use.

Fig. D



5. Turn the Pitcher upside down. Turn the large black screw Cap counterclockwise (LOOSE) to remove the blade. (See Figure D)

# using the Blender (cont.)



Once off, carefully remove the blade by pulling it out of the bottom of the Pitcher. Wash and dry blade completely. For safety reasons, do not touch blades directly with your hands.

**NOTE: When reassembling the blade, be sure to tighten the black screw Cap so the blade does not loosen.**

- 6. NOTE:** DO NOT put unit in dishwasher. We recommend washing the Pitcher, Lid and Cap by hand. For safety reasons, do not handle the Blades directly with your fingers. Fill the Pitcher with warm soapy water. Attach and lock the Pitcher, with Blades secure, to the Base. Then secure the Lid and Cap in place. Press ON button. Increase the speed to 8. Press the RUN button. Allow it to run for 1 minute. Rinse and dry thoroughly.
- 7.** Make sure Base and parts are completely dry before storing in a cool, dry place.
- 8.** Never use abrasive materials or cleansers to clean the main Base or any of the parts. This can scratch the finish causing permanent damage.

**CAUTION: To avoid personal injury use caution while cleaning Blades. They are sharp. Handle carefully.**

# frequently asked questions

This summary briefly answers common questions.  
Read operating manual before use.

**Q. What is the Pitcher made out of?**

A. It is made of a BPA free plastic.

**Q. How many speeds does the unit have?**

A. The unit has 8 variable speeds.

**Q. What are the dimensions of the unit?**

A. 20cm x 22cm x 45.5cm

**Q. How many ounces does the Pitcher hold?**

A. 50 oz. or 1500 ml

**Q. Why won't the machine turn on?**

A. The unit must be properly assembled or it will not power on at all. The Pitcher must be slid into the locked position. Unit will not turn on until the Pitcher Safety Interlocks are fully rotated to the locked position. When the unit is all locked in place a clicking noise can be heard. The display will not light up unless it is properly assembled.

**Q. Why has the unit shut off while using?**

A. Check if the pitcher is loose and is not activating the Pitcher Safety Interlock

**Q. Why does the Blade only spin once and then stop when the "ICE" button is pressed?**

A. The "ICE" button is only used when trying to move contents from the bottom of the Pitcher. It is not a feature that will remain running when pressed.

**Q. What is the horsepower of the unit?**

A. Almost 1 horsepower motor.

**Q. What is the wattage?**

A. 700 watts

**Q. How often should I change my Blades?**

A. The Blades of the unit will never have to be replaced.

**Q. Is it normal for my machine to be loud?**

A. Yes, this is a powerful motor. And there will be some noise associated with it.

**Q. Is it normal for the motor to have a slight burning smell?**

A. Yes, it is normal for the unit to have a factory smell. After a few uses the smell will dissipate.

**Q. Can anything other than the Tamper be used in the machine?**

A. No. The Tamper is specially designed to stop 1 inch above the Blade. We do not recommend that anything other than the Tamper provided is used.

**Q. Is the unit dishwasher safe?**

A. The Base is not dishwasher safe. We recommend washing the Pitcher, Lid and Cap by hand. Fill the Pitcher with warm soapy water. Attach and lock the Pitcher to the Base. Then secure and lock the Lid and Cap in place. Press ON button. Increase the speed to 8. Then press the RUN button. Allow it to run for about 1 minute. Rinse and dry thoroughly.

## MANUFACTURER'S LIMITED WARRANTY

The manufacturer warrants that your HealthMaster™ Blender is free of defects in materials and workmanship and will, at its option, repair or replace any defective HealthMaster™ that is returned to it. The HealthMaster and its parts and components are warranted for 60 days from the original date of purchase. This warranty is valid only in accordance with the conditions set forth below:

1. Normal wear and tear are not covered by this warranty. This warranty applies to consumer use only, and is void when the product is used in a commercial or institutional setting.
2. The warranty extends only to the original consumer purchaser and is not transferable. In addition, proof of purchase must be demonstrated. This warranty is void if the product has been subject to accident, misuse, abuse, improper maintenance or repair, or unauthorized modification.
3. This limited warranty is the only written or express warranty given by the manufacturer. Any implied warranty of merchantability or fitness for a particular purpose on this product is limited in duration to the duration of this warranty. Some states do not allow limitations on how long an implied warranty lasts, so the above limitation may not apply to you.
4. Repair or replacement of the product (or, if repair or replacement is not feasible, a refund of the purchase price) is the exclusive remedy of the consumer under this warranty. The manufacturer shall not be liable for any incidental or consequential damages for breach of this warranty or any implied warranty on this product. Some states do not allow the exclusion or limitation of incidental or consequential damages, so the above limitation or exclusion may not apply to you.
5. This warranty gives you specific legal rights, and you may also have other rights which vary from state to state.

### PROCEDURE FOR WARRANTY REPAIRS OR REPLACEMENT:

If warranty service is necessary, the original purchaser must pack the product securely and send it postage paid with a description of the defect, proof of purchase, and a check or money order for \$00.00 to cover return postage and handling to the following address: HealthMaster™ Blender , P.O. Box 3007, Wallingford, CT 06492.



# troubleshooting

**NOTE:** The HealthMaster™ Blender is a very powerful unit. When operating properly, the motor gives off a loud but smooth sound that changes in pitch as the motor speed is increased. This is normal.

PROBLEM	POSSIBLE REASONS AND SOLUTION
There was a burning smell when the blender was first turned on.	<ul style="list-style-type: none"><li>• There may be a short term Burn-Off Odor when the blender is first used. This is from a lubricant used in manufacturing the motor.</li></ul>
Motor does not run after ON button is pushed.	<ul style="list-style-type: none"><li>• Check to see if unit is plugged in.</li><li>• Pitcher is not in the “locked” position</li><li>• Check if all parts are assembled properly.</li><li>• Check if any food is causing blade to lock.</li></ul>
Normal Loud Smooth Sound becomes unpleasant, more pronounced and uneven, producing erratic and sometimes uncontrolled unit vibration.	<ul style="list-style-type: none"><li>• Push power button to OFF immediately.</li><li>• Unplug unit and check for proper assembly.</li><li>• Reassemble and retry unit.</li></ul>
The bottom of the Pitcher is leaking.	<ul style="list-style-type: none"><li>• Check to see that the black screw Cap is tightened and threaded correctly.</li><li>• The Ring on the Blade may be missing. Make sure you assemble the Blade correctly (pages 13-14).</li><li>• Check the thickness and quantity of mixture, if overloaded, reduce accordingly.</li></ul>
The unit shuts off while in use.	<ul style="list-style-type: none"><li>• Check if the pitcher is loose and is not activating the Pitcher Safety Interlock.</li></ul>

## HealthMaster™ Blender Replacement Parts



LID



SAFETY VALVE RELEASE



PITCHER



TAMPER

To order please call or for more information visit:

**[www.myhealthmaster.com](http://www.myhealthmaster.com)**

or call 1-973-287-???? — 8:00am–9:00pm EST Monday–Friday  
9:00am–5:00pm EST Saturday & Sunday Please allow 3-4 weeks for shipping.

**YES! Please send the following HealthMaster™ Blender items:**

- E-Z Lock Cap for only \$0.00. FREE s&h. Total \$0.00.
- Tamper for only \$0.00. FREE s&h. Total \$0.00.
- Lid for only \$0.00. FREE s&h. Total \$0.00.
- Pitcher for only \$0.00. FREE s&h. Total \$0.00.

VISA  MasterCard  Discover Exp. Date \_\_\_\_\_

Credit Card # \_\_\_\_\_

Check  Money Order (NJ, PA, CT residents add sales tax. CA, NV & NY add applicable rate.) U.S. currency only

Print Name \_\_\_\_\_

Address \_\_\_\_\_

Apt. \_\_\_\_\_ City \_\_\_\_\_

State \_\_\_\_\_ Zip \_\_\_\_\_

Phone# \_\_\_\_\_

E-mail \_\_\_\_\_

Please make checks payable to: HealthMaster™ Blender

Mail Payment Today To: **HEALTHMASTER**, 26 Barnes Industrial Rd. North,  
P.O. Box 3125, Dept. ????, Wallingford, CT 06494





***Congratulations*** on your purchase of the HealthMaster™ Blender. We are very proud of the functional design and exceptional quality of this product. Our manufacturing process is geared to deliver long years of product service to our valued customers. Should you experience any problem with your purchase, our dedicated customer service staff is here to serve you.

We are available at:

**1-973-287-0000**

or see our website at:

**[www.myhealthmaster.com](http://www.myhealthmaster.com)**

Distributed By:



Tristar Products, Inc.  
Fairfield, NJ 07004